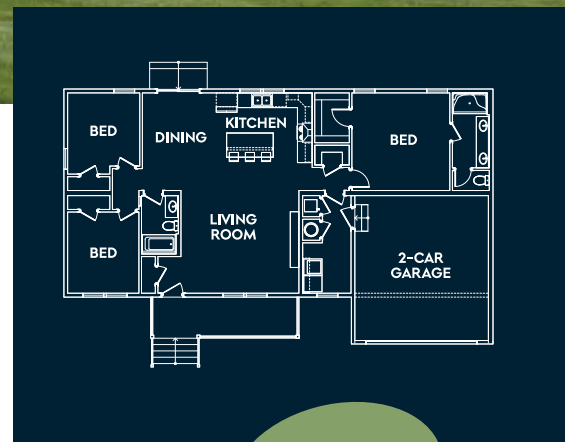


MEADOWVIEW

Open living with room to gather.

The Meadowview offers a welcoming layout designed for everyday living. The open kitchen, dining, and living areas create a bright central space that makes it easy to relax at home or entertain friends and family. The kitchen features a convenient walk-in pantry, while the private primary suite includes a spacious walk-in closet for added comfort and storage. A utility room with access from the garage helps keep daily routines organized, and the inviting front porch offers the perfect place to sit and enjoy a beautiful day.



AT A *Glance*

1,576	SQUARE FEET
3	BEDROOMS
2	BATHROOMS
2C	GARAGE
1	STORIES



For more information on this or any of our high-quality modular homes, learn more at lifestylemodular.com

*Rendering shown for graphic purposes, actual elevations may vary.
All plans, pricing, items and features subject to change without notice.



V-7 Meadowview

1576 Sq. Ft Heated/Cooled
1869 Sq. Ft Under Roof

